

Flagstaff Court, Canterbury, Kent, CT1 3HA

£650 Per Calendar Month



1



1



1



c

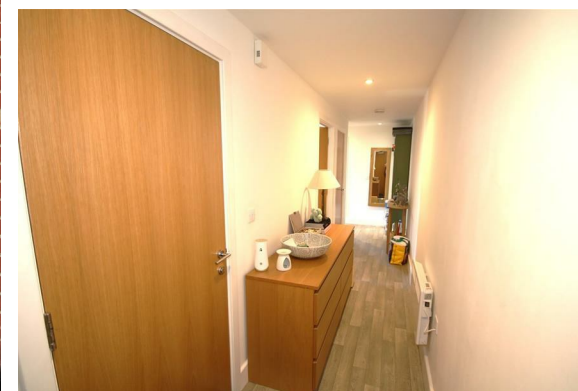
## Flagstaff Court

Canterbury, Kent CT1 3HA

A unique opportunity to live in this shared accommodation just minutes from Canterbury City Centre. This development is very secure and access to the apartment is via a lift. The entrance hallway leads you to a double bedroom which has a separate bathroom. The main living space is an open plan sitting room and kitchen with built in appliances and this apartment benefits from an balcony. Parking is via permit from Canterbury City Council for the St George's area.

Available for a short term let  
Rent excluding bills - £650 (Council tax, internet, electricity)  
Council tax band: C.  
Deposit: £750 - This can be paid anytime until your tenancy begins (EXCLUDING Holding Deposit)  
All viewings are strictly by appointment only.  
No Pets /Children

Please refer to the fee's tab on our website ([www.sallyhatcher.co.uk](http://www.sallyhatcher.co.uk)) for all information on fee's and deposit options





Floor Plan



Viewing

Please contact us on 01227 733888 if you wish to arrange a viewing appointment for this property or require further information.

These particulars, whilst believed to be accurate are set out as a general outline only for guidance and do not constitute any part of an offer or contract. Intending purchasers should not rely on them as statements of representation of fact, but must satisfy themselves by inspection or otherwise as to their accuracy. No person in this firms employment has the authority to make or give any representation or warranty in respect of the property.

Area Map



Energy Efficiency Graph

